



SEED BEAD BEADED COLLAR HOW TO

SUPPLIES NEEDED:

Size D Thread, Size 10 long beading needle

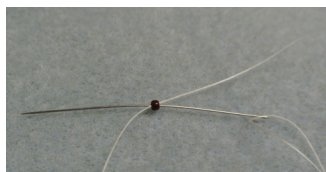
Two colors of seed beads size 10 or 11

(Two colors is not necessary, however, for a beginner two colors will help to show where the intersections of the collar will be)

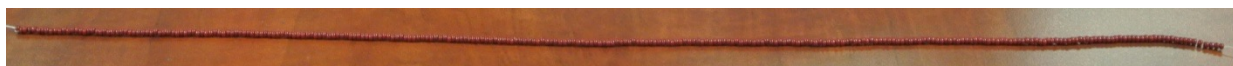


CREATING THE NECK PIECE:

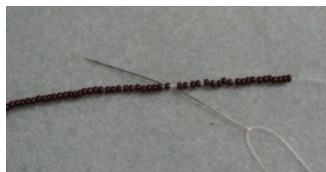
1. To begin, get an extremely long piece of thread. (about 4 wingspans or whatever you feel comfortable working with) Single thread your needle. (can be double threaded but hard to work with on seed beads) Wax the thread so that it will be easy to work with.
2. To make sure the beads don't fall off as you are stringing the neck piece, add a stop bead. Do this by adding a single bead to the end of the thread and run your needle up through that bead in the same direction to form a loop around that bead. This can be done a couple of times to make sure it stays.



3. The first step to beading the collar is simply stringing beads that will go around your neck comfortably. Once the color of this is determined, put beads of same color on the waxed thread that measure at least 23 inches or enough room that will fit comfortably around your neck. You might rather have this collar a little loose than tight fitting.



4. Once you get a good length of beads on your thread add 20 more beads of the same color. These will form the loop that you can connect a safety pin to on the end. To form the loop, skip the last 20 beads that you have put on and go the opposite direction through the 21st bead. This creates a loop to connect the two sides.



5. Go through 5 more beads next to the one you made your loop with to give a little space between the loop and the start of your collar.





SEED BEAD BEADED COLLAR HOW TO | CONT'D

BEGIN BEADING THE FIRST ROW OF NET BEADING OF THE COLLAR:

The photographed collar was beaded with this pattern for the first row. It starts at the top by the long string of beads for the neck and works downward. All of the (3)'s and the last 6 will be white.

Pattern:

3 white, 4 red, 3 white, 4 red, 3 white, 5 red, 3 white, 5 red, 3 white, 6 red, 3 white, 6 red, 3 white, 7 red, 3 white, 7 red, 3 white, 8 red, 6 white

** This pattern measure to hang 3 ½ inches off of the shoulder. In order to make this pattern longer, add 3 white beads after the 8 red instead of adding the final 6 white beads.

6. Starting after step number 5, add 3 beads of the same color. These 3 beads can be the same color as the neck piece and intersections or they can be the color of the net beads.
7. Once the previous 3 beads have been added, add 4 beads in the color that you want the net to be.
8. Then add 3 beads of the other color. Another color is used because this will be the intersection and you will need to be able to distinguish between the net beads and intersections beads at a glance.
9. Then add 4 red beads followed by 3 white beads to make the next intersection.
10. Use the pattern above, starting 5 red beads and continue to add the beads in the colors that are instructed until you have strung the final 6 beads on the end.



11. Those six beads are to be in the same color as your intersections. After the six beads are added, skip five of the six beads and run your needle up through the sixth bead in the opposite direction to create a loop. Just as the loop was created on the neck piece.





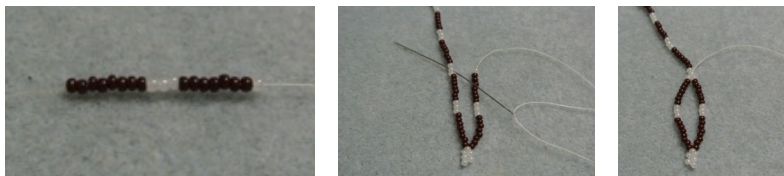
SEED BEAD BEADED COLLAR HOW TO | CONT'D

THE PATTERN GOING BACK UP TOWARDS THE NECK STRING IS SLIGHTLY DIFFERENT:

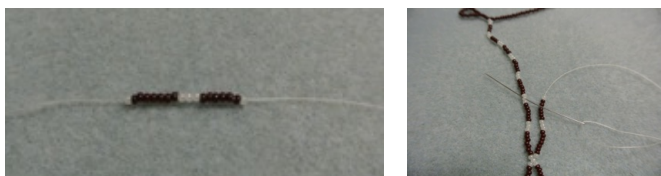
The pattern to go back up the row is different from the first row because you will have to go through the intersection of the previous row. If there were any added to create a longer collar you will need to go along with the number of beads that you decided to stop on.

Pattern for photographed collar:

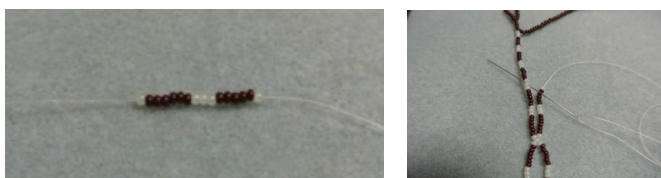
8 red, 3 white, 7 red, 1 white, take your needle through the center white bead that is next to it on the first row.



1 white, 7 red, 3 white, 6 red, 1 white, through the center white bead.



1 white, 6 red, 3 white, 5 red, 1 white, through the center white bead.



1 white, 5 red, 3 white, 4 red, 1 white, through center white bead on previous row.



1 white, 4 red, 3 white, move over to 7th bead on neck chain to start a new row (look below)





SEED BEAD BEADED COLLAR HOW TO | CONT'D

STARTING A NEW ROW:

*Once you are at the top towards the neck chain of beads, skip 7 seed beads in the direction opposite the beaded rows that you have completed in the chain and then go through the 7th bead. Once you've gone through the 7th bead, go back through the last three white beads that were added.

Once you have gone through those three beads, it is now time to bead a row going down away from your neck chain. *You will repeat the same pattern every time you are beading away from the neck chain. 1 white, 4 red, 3 white, move over to 7th bead on neck chain to start a new row (look below)

4 red, 3 white, 4 red, 1 white, through the bead from the previous row.



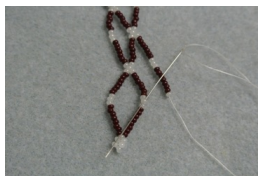
1 white, 5 red, 3 white, 5 red, 1 white, go through the center white bead from the previous row.



1 white, 6 red, 3 white, 6 red, 1 white, through the center white bead from the previous row.



1 white, 7 red, 3 white, 7 red, 1 white, through the center white bead from the previous row.



1 white, 8 red, 6 white, form loop through 6th bead.





SEED BEAD BEADED COLLAR HOW TO | CONT'D

FORMING THE LOOP AND STARTING A NEW ROW UPWARD:

Of those last 6 white, skip 5 of those beads, and working back up towards the top to the neck chain go through the first white bead next to the 8 red beads and then add another 8 red beads to start the next row that works upwards.

The pattern will be the same as before working towards the top:

8 red, 3 white, 7 red, 1 white, take your needle through the center white bead that is next to it on the first row.

1 white, 7 red, 3 white, 6 red, 1 white, through the center white bead.

1 white, 6 red, 3 white, 5 red, 1 white, through the center white bead.

1 white, 5 red, 3 white, 4 red, 1 white.

1 white, 4 red, 3 white, through 7th bead.

*Once you have bead this far, the same patterns will occur over and over.

PATTERNS:

When working downward away from the neck chain:

4 red, 3 white, 4 red, 1 white, through white center bead from previous row

1 white, 5 red, 3 white, 5 red, 1 white, through white center bead from previous row

1 white, 6 red, 3 white, 6 red, 1 white, through white center bead from previous row

1 white, 7 red, 3 white, 7 red, 1 white, through white center bead from previous row

8 red, 6 white, form loop through 6th white bead (Start upward pattern)

When working upward towards the neck chain:

8 red, 3 white, 7 red, 1 white, through white center bead from previous row

1 white, 7 red, 3 white, 6 red, 1 white, through white center bead from previous row

1 white, 6 red, 3 white, 5 red, 1 white, through white center bead from previous row

1 white, 5 red, 3 white, 4 red, 1 white, through white center bead from previous row

1 white, 4 red, 3 white, 7th bead over on neck piece, go back down previous 3 white beads (Start downward pattern)

ENDING OF COLLAR:

When getting to the end of your neck piece, count out 25 beads and make a loop like at the beginning. *To form the loop, skip the last 20 beads that you have put on and go the opposite direction through the 21st bead. This creates a loop to connect the two sides. Go through 5 more beads next to the one you made your loop with to give a little space between the loop and the start of your collar. Knot off well and hide it by going through more of the neck piece beads as necessary.

