



MINI BREASTPLATE

HOW TO

SUPPLIES NEEDED:

Crystal Beads
Bone beads
Bone spacers
Metal Ring
Stringing leather/sinew
Leather ties
Scissors



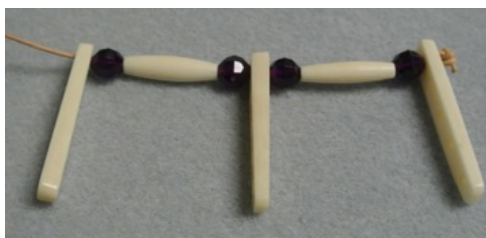
1. The simplest method of construction is to lay out your beads, leather, bones, etc. exactly as you want them to appear in the sketch. They can then be arranged and re-arranged. By working in this way, you can see what the finished project will look like without stringing and re-stringing.



2. Double knot one end of the stringing leather or sinew and thread it through the first spacer. You may tie the knot around the spacer if you wish instead of making a large knot that will not pull through the hole. Begin stringing the first row of the breastplate according to the pattern.



3. At the end of a row, pull the stringing leather through to start a new row. Continue this for each row until the very end.



4. At the end of the last row, tie several knots in the stringing leather or sinew for added security.





MINI BREASTPLATE

HOW TO | CONT'D

5. Now we will tie the metal ring in the center of the breastplate. Wrap a piece of leather, about 8 inches around the middle spacer and in between the first and second row. Put the metal ring on the two pieces of leather in the two holes. Knot off twice.



6. You can now use the leather tie to create a large loop to hang the breastplate.
7. Slide the leather between the first spacer and crystal bead, knot off twice to secure. String the leather around to the other end of the first row.
8. Slide the leather between the 4th crystal bead and spacer. Knot off twice to secure. Now you can hang your breastplate.
9. You can also add any extra stringing leather and beads if you desire.

