
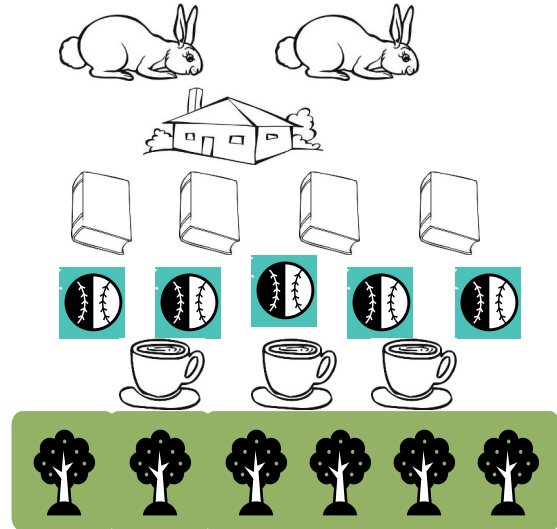


IDENTIFYING NOUNS

Make sentences with the pictures at the right using *yummvt* or *ilvppvt*.

Example: *Ilvppvt towa achvffa.* 

1. *Ilvppvt chukfi tuklo.*
2. *Yummvt chukka achvffa.*
3. *Ilvppvt holisso ushta.*
4. *Yummvt towa tahlapi.*
5. *Ilvppvt isht ishko tuchina.*
6. *Yummvt iti hannali.*



Identify the nouns by writing the Choctaw word on the line.



shulush



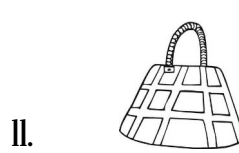
hushi



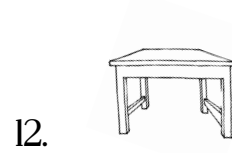
katos



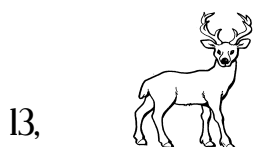
isht ishko



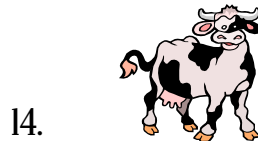
shukcha



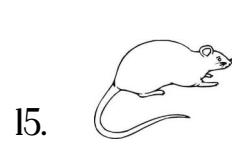
aiimpa



issi

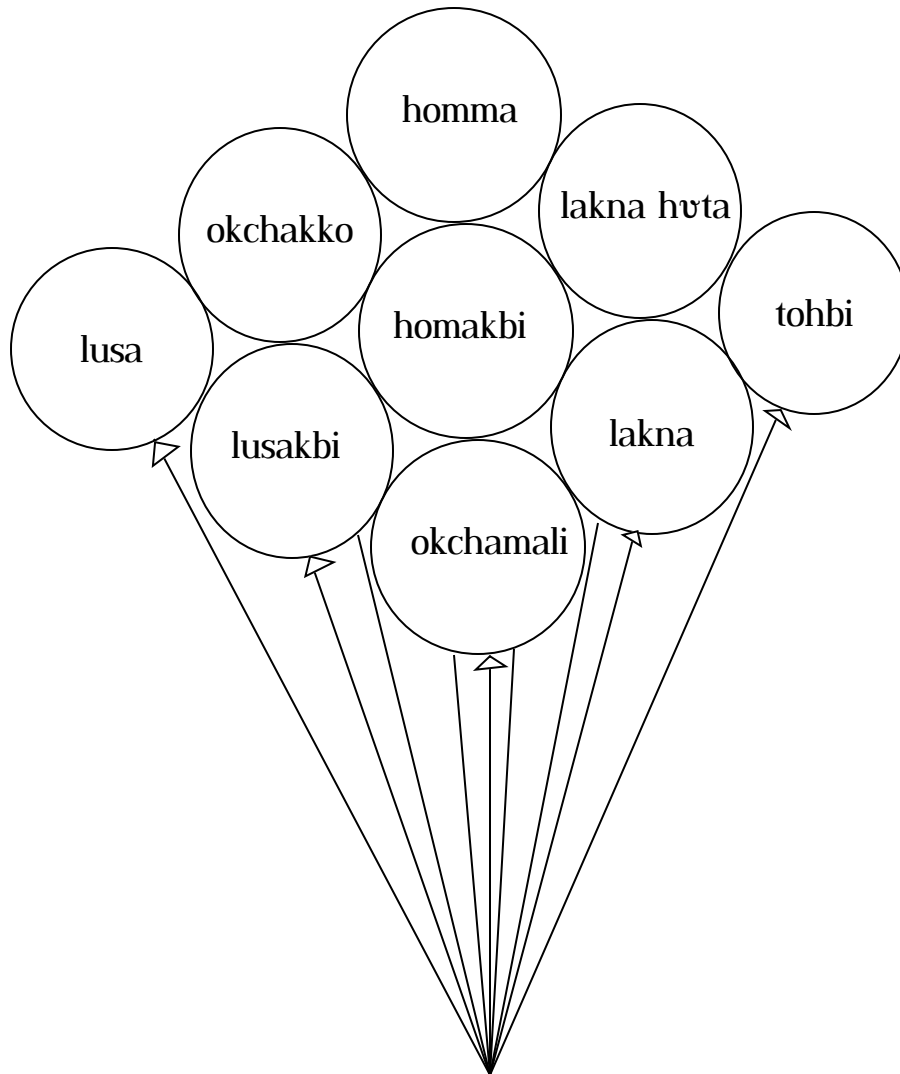


wak



pinti

Choctaw Color Chart



- | | | | |
|------------|--------------------|------------|----------------|
| 16. blue | <i>okchakko</i> | 21. black | <i>lusa</i> |
| 17. green | <i>okchamali</i> | 22. red | <i>homma</i> |
| 18. orange | <i>lakna h̄vta</i> | 23. brown | <i>lusakbi</i> |
| 19. purple | <i>homakbi</i> | 24. yellow | <i>lakna</i> |
| 20. white | <i>tohbi</i> | | |